



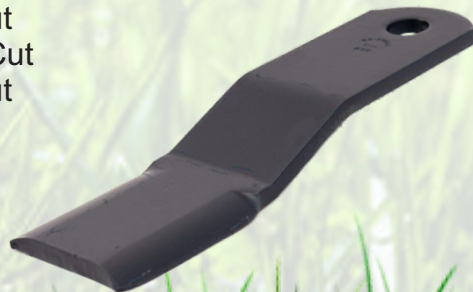
# Slasher Blades to suit Gason & Chris Grow



- ✓ **European BORON steel**
- ✓ **Increased Wear Resistance**
- ✓ **Tough, durable & ductile**
- ✓ **Great freight rates**

**Talk to us about discounted pricing on the range of  
ASP Gason & Chris Grow Blades.**

<b>BS-08226</b>	OEM Ref <b>226511</b>	Suction Lift, Right Hand Cut
<b>BS-08227</b>	OEM Ref <b>226512</b>	Suction Lift, Left Hand Cut
<b>BS-08228</b>	OEM Ref <b>223542</b>	Suction Lift, Right Hand Cut
<b>BS-08229</b>	OEM Ref <b>223543</b>	Suction Lift, Left Hand Cut
<b>BS-08922</b>	OEM Ref <b>226427</b>	Suction Lift, Left Hand Cut
<b>BS-08923</b>	OEM Ref <b>226428</b>	Suction Lift, Right Hand Cut
<b>BS-09043</b>	OEM Ref <b>225803</b>	Step Down, Double Edge
<b>BS-09044</b>	OEM Ref <b>226572</b>	Step Down, Double Edge
<b>BS-09045</b>	OEM Ref <b>224936</b>	Step Down, Double Edge
<b>BS-09046</b>	OEM Ref <b>226570</b>	Suction Lift, Left Hand Cut
<b>BS-09047</b>	OEM Ref <b>226571</b>	Suction Lift, Right Hand Cut
<b>BS-09048</b>	OEM Ref <b>225159</b>	Suction Lift, Right Hand Cut
<b>BS-09049</b>	OEM Ref <b>225158</b>	Suction Lift, Left Hand Cut
<b>BS-09050</b>	OEM Ref <b>226569</b>	Suction Lift, Right Hand Cut
<b>BS-09051</b>	OEM Ref <b>226568</b>	Suction Lift, Left Hand Cut
<b>BSA-00178</b>	Blade bush to suit 9mm / 10mm thick blades	
<b>BSA-00179</b>	Blade bush to suit 12mm / 13mm thick blades	
<b>BSA-100675</b>	Blade bolt, Hex head high tensile	
<b>BSA-100852</b>	Nyloc Nut suit Blade Bolt	



**[sales@asproducts.com.au](mailto:sales@asproducts.com.au)**

**Ph: 07 3881 3464**

**The use of OEM names & part numbers is for reference only. Not sold as genuine.**